



Department of Public Works
Engineering Division
Robert F. Phillips, P.E., City Engineer

City-County Building, Room 115
210 Martin Luther King, Jr. Boulevard
Madison, Wisconsin 53703
Phone: (608) 266-4751
Fax: (608) 264-9275
engineering@cityofmadison.com
www.cityofmadison.com/engineering

Assistant City Engineer

Gregory T. Fries, P.E.
Kathleen M. Cryan

Principal Engineer 2

Christopher J. Petykowski, P.E.
John S. Fahrney, P.E.

Principal Engineer 1

Christina M. Bachmann, P.E.
Mark D. Moder, P.E.
Janet Schmidt, P.E.

Facilities & Sustainability

Jeanne E. Hoffman, Manager
Bryan Cooper, Principal Architect

Mapping Section Manager

Eric T. Pederson, P.S.

Financial Manager

Steven B. Danner-Rivers

August 5, 2019

**NOTICE OF ADDENDUM
ADDENDUM 1
CONTRACT NO. 8461
CIPP REHAB OF SANITARY AND STORM SEWERS - 2019**

Revise and amend the contract document(s) for the above project as stated in this addendum, otherwise, the original document shall remain in effect.

SPECIAL PROVISIONS:

EDITS TO SECTION 509.7(a) CIPP SAMPLES:

ADD FOLLOWING SENTENCE TO END OF SECOND PARAGRAPH :

APS Water Tightness Standard DWA M143-20 testing shall not be used for this contract and the requirement will not need to be met for acceptance of the liner.

PROPOSAL:

Action	Bid Item	Description
MODIFY	50904	FURNISH AND INSTALL CIPP TO REHABILITATE 12-INCH DIAMETER SANITARY SEWER MAINS
MODIFY	50909	REINSTATE AND RECONNECT SERVICE OPENINGS

PLAN SET:

Remove and replace plan sheet TITLE and D2 and add plan sheet P-44 with attached revised plan sheets.

Please acknowledge this addendum on page E1 of the contract documents and/or in Section E: Bidder's Acknowledgement on Bid Express.

Electronic version of these documents can be found on the Bid Express web site at:

<http://www.bidexpress.com>

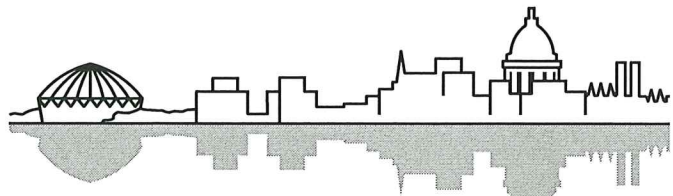
August 5, 2019
Page 2

If you are unable to download plan revisions associated with the addendum, please contact the Engineering office at 608-266-4751 receive the material by another route.

Sincerely,

A handwritten signature in black ink, appearing to read "Robert Phillips". The signature is written in a cursive style with large, rounded letters.

Robert F. Phillips, P.E., City Engineer



Madison, Wisconsin

INDEX OF SHEETS REV 8/1/2019 KDF

SHEET NO.	TITLE
SHEET NO. 1	DETAILED LINING LIMITS
SHEET NO. DI-D2	MEMORIAL HIGH SCHOOL PLANS
SHEET NO. P1-P2	GETTYSBURG DR, GREENWAY PLANS
SHEET NO. P3	WATTS RD PLANS
SHEET NO. P4	SEYBOLD RD PLANS
SHEET NO. P5	ANCHORAGE AVE & BEACH ST PLANS
SHEET NO. P6	CAPITAL AVE PLANS
SHEET NO. P7	BLANCHARD ST PLANS
SHEET NO. P8	LAKE MENDOTA DR PLANS
SHEET NO. P9	NORMAN WAY PLANS
SHEET NO. P10	WATT'S RD PLANS
SHEET NO. P11-P14	EAU CLAIRE AVE PLANS
SHEET NO. P15-P16	WHITNEY WAY & W. BELTLINE PLANS
SHEET NO. P17	VERONA RD PLANS
SHEET NO. P18	S.W. COMMUTER BIKE PATH PLANS
SHEET NO. P19	SEMINOLE HIGHWAY PLANS
SHEET NO. P20-22	TODD DR PLANS
SHEET NO. P23	APPLEGATE RD PLANS
SHEET NO. P24-P27	BRITTINGHAM PARK PLANS
SHEET NO. P28	N. HENRY ST & N. CARROLL ST PLANS
SHEET NO. P29	FAYETTE AVE PLANS
SHEET NO. P30	FORDEM AVE PLANS
SHEET NO. P31	SUGAR AVE PLANS
SHEET NO. P32	COMMERCIAL AVE PLANS
SHEET NO. P33	NAKOOSA TRAIL PLANS
SHEET NO. P34-P35	FREMONT AVE PLANS
SHEET NO. P36	DREWRY LN PLANS
SHEET NO. P37-P39	WHEELER RD PLANS
SHEET NO. P40-P41	REGENT ST PLANS
SHEET NO. P42	GLENWOOD PARK PLANS
SHEET NO. P43	N. BASSETT ST PLANS
SHEET NO. P44	

CITY OF MADISON

CITY ENGINEERING DIVISION

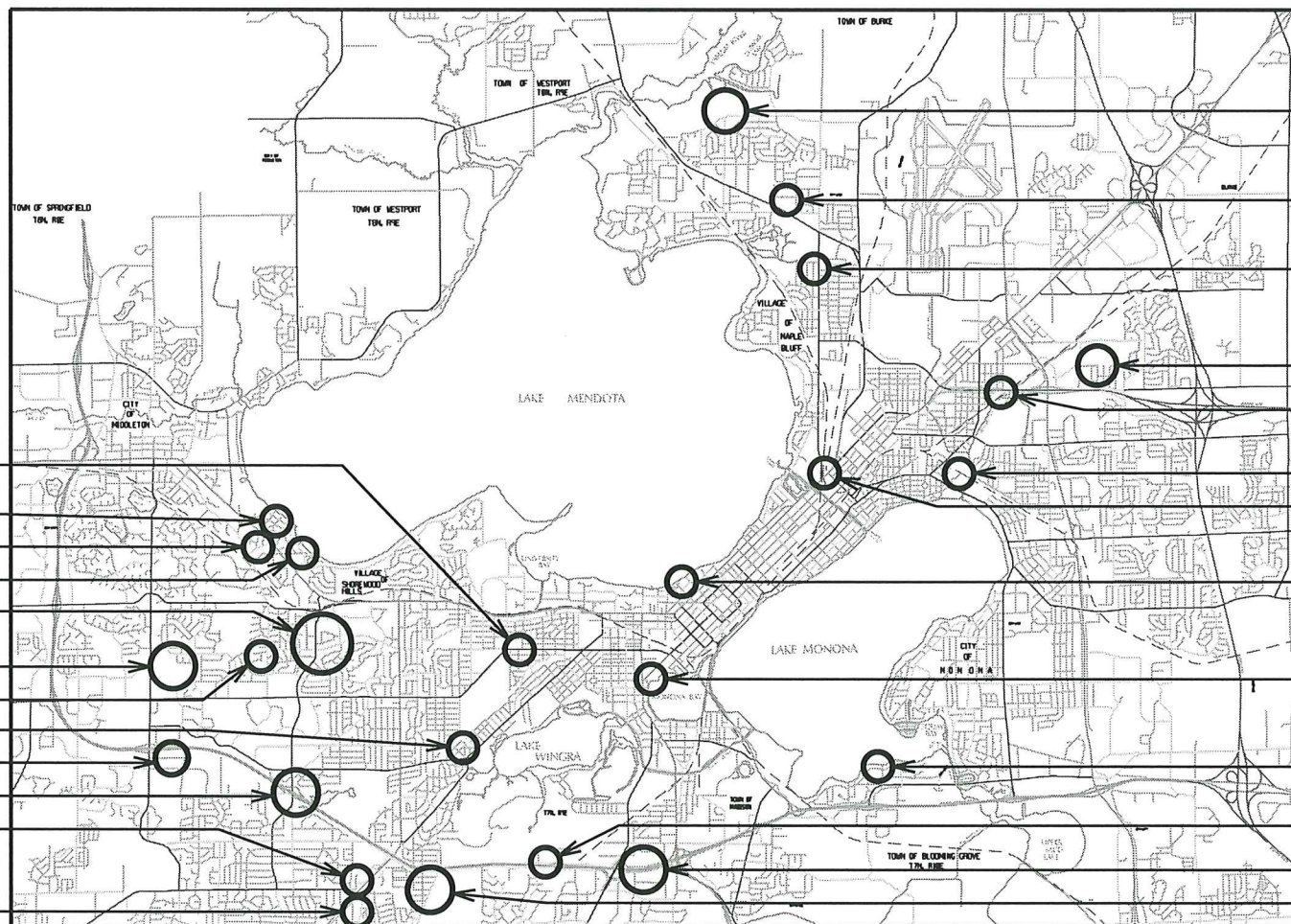
DEPARTMENT OF PUBLIC WORKS

PLAN OF PROPOSED IMPROVEMENT

CIPP REHAB OF SANITARY AND STORM SEWERS - 2019

CITY PROJECT NO. 11989

CITY CONTRACT NO. 8461



PUBLIC IMPROVEMENT PROJECT APPROVED

JANUARY 8, 2019

BY THE COMMON COUNCIL OF MADISON, WISCONSIN

PUBLIC IMPROVEMENT DESIGN APPROVED BY:

[Signature] 7/12/19
 City Engineer Date

SANITARY & STORM SEWER DESIGNED BY:



PLOT SCALE:

PLOT NAME:

REV. DATE:

ORIGINATOR: CITY OF MADISON, STREETS DIVISION

FILE NAME:

DATE: 7/12/2019

DETAILED LINING LIMITS

CITY OF MADISON

DETAILED LINING LIMITS

LOCATION	U.S. STRUCT.	D.S. STRUCT.	DIA (IN)	LENGTH (LF)	MATERIAL	LATERALS	SHEET
DREWRYL LN	SAS 5324-007	SAS 5324-008	12	305	VP	1	P-38
LAKE VIEW AVE	SAS 5324-002	SAS 5324-008	6	240	VP	1	P-38
DREWRYL LN	SAS 5324-008	SAS 5324-009	12	465	VP	1	P-38
DREWRYL LN	SAS 5324-009	SAS 5324-010	12	24	VP	0	P-38
LAKE VIEW AVE	SAS 5324-017	SAS 5324-010	8	181	VP	1	P-38
DREWRYL LN	SAS 5324-010	SAS 5324-011	12	281	VP	0	P-38
DREWRYL LN	SAS 5324-011	SAS 5425-028	12	260	VP	2	P-38
HANOVER ST	SAS 5425-009	SAS 5425-010	12	215	VP	2	P-39
HANOVER ST	SAS 5425-010	SAS 5425-015	12	226	VP	1	P-39
WHEELER RD	SAS 5120-003	SAS 5120-002	12	367	CI	0	P-40
WHEELER RD	SAS 5120-002	SAS 5120-001	12	363	CI	0	P-40
SCHOOL RD	SAS 5120-001	SAS 5020-015	12	347	CI	0	P-40
SCHOOL RD	SAS 5020-015	SAS 5020-017	12	348	CI	0	P-40
WHEELER RD	SAS 5020-017	SAS 5020-012	12	106	CI	0	P-40
WHEELER RD	SAS 5020-013	SAS 5020-012	8	290	VP	4	P-40
WHEELER RD	SAS 5020-012	SAS 5020-021	12	129	CI	0	P-41
WHEELER RD	SAS 5020-021	SAS 5020-010	15	330	DI	0	P-41
WHEELER RD	SAS 5020-010	SAS 5019-001	15	443	DI	0	P-41
WHEELER RD	SAS 5019-001	MSD MH14-101	15	400	DI	0	P-41
BASSETT ST, N.	SAS 4951-033	SAS 4951-027	12	382	VP	7	P-44
BASSETT ST, N.	SAS 4951-027	SAS 4951-018	12	318	VP	6	P-44

STORM SEWER

LOCATION	U.S. STRUCT.	D.S. STRUCT.	DIA (IN)	LENGTH (LF)	MATERIAL	LATERALS	SHEET
REGENT ST.	AS 4253-012	AS 4253-007	12	225	VP	0	P-42
REGENT ST.	AS 4253-007	AS 4253-001	12	420	VP	4	P-42
REGENT ST.	AS 4253-015	AS 4253-001	12	270	VP	0	P-42
REGENT ST.	AS 4253-001	AS 4253-004	12	205	VP	1	P-42
REGENT ST.	AS 4253-004	MI 4253-038	12	408	VP	1	P-42
REGENT ST.	MI 4253-038	IN 4253-005	15	33	VP	0	P-42
REGENT ST.	AS 4353-045	AS 4353-040	15	55	VP	0	P-42
GLENWOOD PARK	AS 4058-003A	AS 4058-003	24	82	CMP	0	P-43

LOCATION	U.S. STRUCT.	D.S. STRUCT.	DIA (IN)	LENGTH (LF)	MATERIAL	LATERALS	SHEET
DANBURY ST	SAS 3867-010	SAS 3867-020	8	384	VP	12	P-22
SEMINOLE HWY	SAS 3866-011	SAS 3967-001	8	127	VP	1	P-22
SEMINOLE HWY	SAS 3967-001	SAS 3867-013	8	170	VP	2	P-22
SEMINOLE HWY	SAS 3867-013	SAS 3867-014	8	113	VP	1	P-22
SEMINOLE HWY	SAS 3867-014	SAS 3867-015	8	247	VP	3	P-22
SEMINOLE HWY	SAS 3867-015	SAS 3867-016	8	390	VP	12	P-22
SEMINOLE HWY	SAS 3867-016	SAS 3867-021	8	111	VP	1	P-22
TODD DR	SAS 4366-016	MAD LS01-000	12	18	CI	0	P-23
ANN ST	SAS 4765-008	SAS 4766-001	8	276	VP	1	P-24
ANN ST	SAS 4766-001	SAS 4766-002	8	205	VP	2	P-24
ANN ST	SAS 4766-002	SAS 4766-004	8	301	VP	0	P-24
ANN ST	SAS 4766-004	SAS 4766-005	8	216	VP	0	P-24
ANN ST	SAS 4766-005	SAS 4666-003	8	187	VP	3	P-24
ANN ST	SAS 4666-003	SAS 4666-002	8	246	VP	1	P-24
ANN ST	SAS 4666-002	SAS 4666-001	8	257	VP	1	P-24
BELTLINE HIGHWAY, W.	SAS 4766-008	SAS 4766-006	8	325	CI	0	P-25
BELTLINE HIGHWAY, W.	SAS 4766-006	SAS 4766-005	8	22	CI	0	P-25
LATHAM DR	SAS 4767-004	SAS 4767-003	8	390	VP	9	P-25
LATHAM DR	SAS 4767-003	SAS 4767-002	8	44	VP	0	P-25
LATHAM DR	SAS 4767-002	SAS 4767-001	8	267	VP	3	P-25
LATHAM DR	SAS 4767-001	SAS 4766-009	8	281	VP	0	P-25
JONATHON DR	SAS 4767-006	SAS 4767-005	8	398	VP	3	P-26
JONATHON DR	SAS 4767-005	SAS 4767-002	8	399	VP	5	P-26
APPLEGATE RD	SAS 4766-009	SAS 4766-010	8	338	VP	1	P-26
APPLEGATE RD	SAS 4766-010	SAS 4766-011	8	324	VP	2	P-26
APPLEGATE RD	SAS 4766-011	SAS 4866-001	8	334	VP	3	P-26
APPLEGATE RD	SAS 4866-001	SAS 4866-002	8	336	VP	3	P-27
APPLEGATE RD	SAS 4866-002	SAS 4866-003	8	294	VP	3	P-27
APPLEGATE RD	SAS 4866-003	SAS 4866-005	8	334	VP	1	P-27
PERRY ST	SAS 4867-003	SAS 4866-003	8	398	VP	5	P-27
BRITTINGHAM PARK	SAS 4854-001	MSD MH02-403	6	395	CI	0	P-28
CARROLL ST, N.	SAS 4948-008	SAS 4948-009	8	85	CI	0	P-29
CARROLL ST, N.	SAS 4948-010	SAS 4948-009	8	60	VP	0	P-29
CARROLL ST, N.	SAS 4948-009	LS4	8	8	VP	0	P-29
HENRY ST, N.	SAS 4948-054	SAS 4948-060	10	78	CI	0	P-29
FAYETTE AVE	SAS 5759-001	LS18	8	391	VP	5	P-30
FORDEM AVE	SAS 5541-003	SAS 5541-005	12	180	CI	0	P-31
FORDEM AVE	SAS 5541-005	SAS 5541-006_1	6	40	VP	0	P-31
FORDEM AVE	SAS 5541-005	SAS 5541-006_2	12	40	VP	0	P-31
FORDEM AVE	SAS 5541-005	SAS 5541-006_3	6	40	VP	0	P-31
FORDEM AVE	SAS 5541-006	MSD MH01-003	12	85	CI	0	P-31
SUGAR LN	SAS 6141-007	MSD MH06-104	15	16	CI	0	P-32
COMMERCIAL AVE	SAS 6237-002	MSD MH10-305	12	328	VP	0	P-33
NAKOOSA TRL	SAS 6635-007	SAS 6635-006	8	261	VP	2	P-34
NAKOOSA TRL	SAS 6635-006	SAS 6635-005	8	61	VP	1	P-34
NAKOOSA TRL	SAS 6635-005	SAS 6635-004	8	232	VP	2	P-34
NAKOOSA TRL	SAS 6635-004	SAS 6635-003	8	234	VP	2	P-34
NAKOOSA TRL	SAS 6635-003	SAS 6635-002	10	265	VP	3	P-34
NAKOOSA TRL	SAS 6735-002	SAS 6735-003	8	328	VP	0	P-35
NAKOOSA TRL	SAS 6735-003	SAS 6735-006	8	332	VP	2	P-35
NAKOOSA TRL	SAS 6735-006	SAS 6635-007	8	353	VP	1	P-35
FREMONT AVE	SAS #20	LS10	24	88	CI	0	P-36
DREWRYL LN	SAS 5325-002	SAS 5325-012	8	222	VP	2	P-37
DREWRYL LN	SAS 5325-012	SAS 5325-011	8	51	VP	0	P-37
DREWRYL LN	SAS 5325-011	SAS 5325-010	8	308	VP	3	P-37
DREWRYL LN	SAS 5325-010	SAS 5325-008	8	199	VP	2	P-37
DREWRYL LN	SAS 5224-001	SAS 5324-007	12	125	VP	0	P-38

PLOT SCALE:

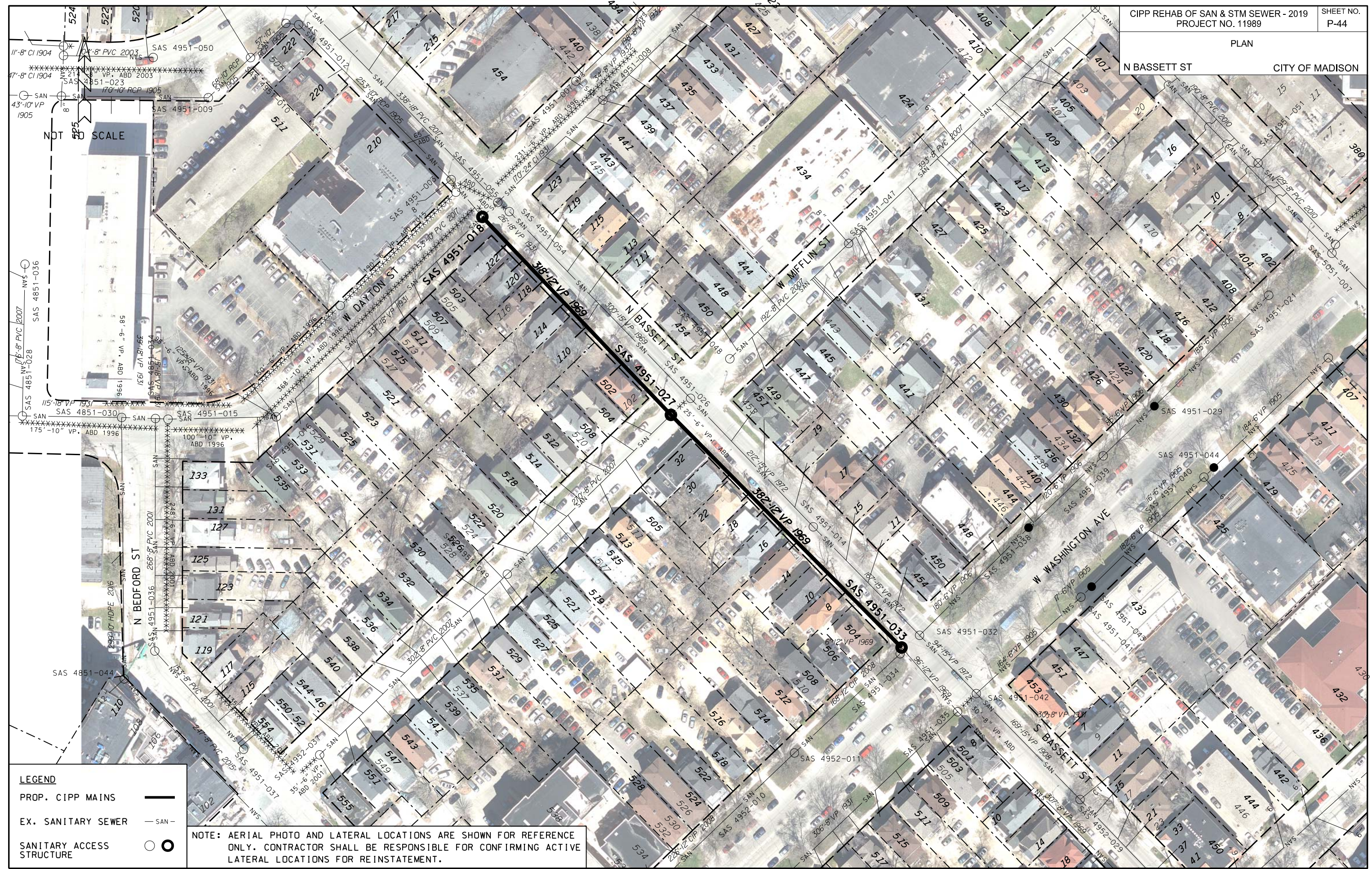
PLOT NAME:

REV. DATE:

ORIGINATOR: CITY OF MADISON, STREETS DIVISION

PLAN

N BASSETT ST CITY OF MADISON



NOT SCALE

PLOT SCALE: NOT TO SCALE

PLOT NAME: _____

REV. DATE: _____

ORIGINATOR: CITY OF MADISON - ENGINEERING

LEGEND

- PROP. CIPP MAINS ———
- EX. SANITARY SEWER — SAN —
- SANITARY ACCESS STRUCTURE ○

NOTE: AERIAL PHOTO AND LATERAL LOCATIONS ARE SHOWN FOR REFERENCE ONLY. CONTRACTOR SHALL BE RESPONSIBLE FOR CONFIRMING ACTIVE LATERAL LOCATIONS FOR REINSTATEMENT.